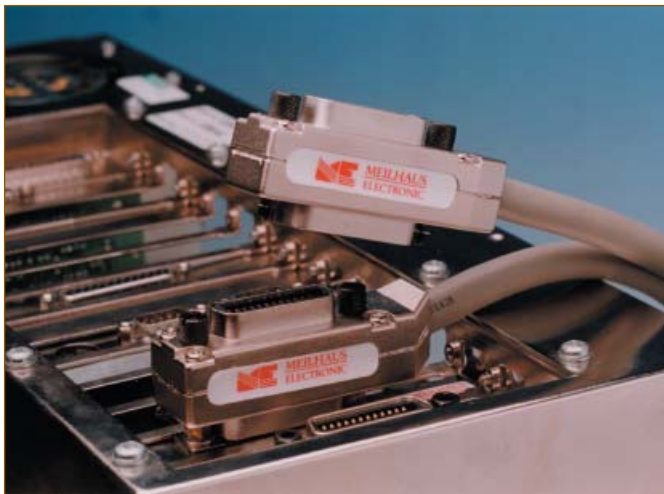
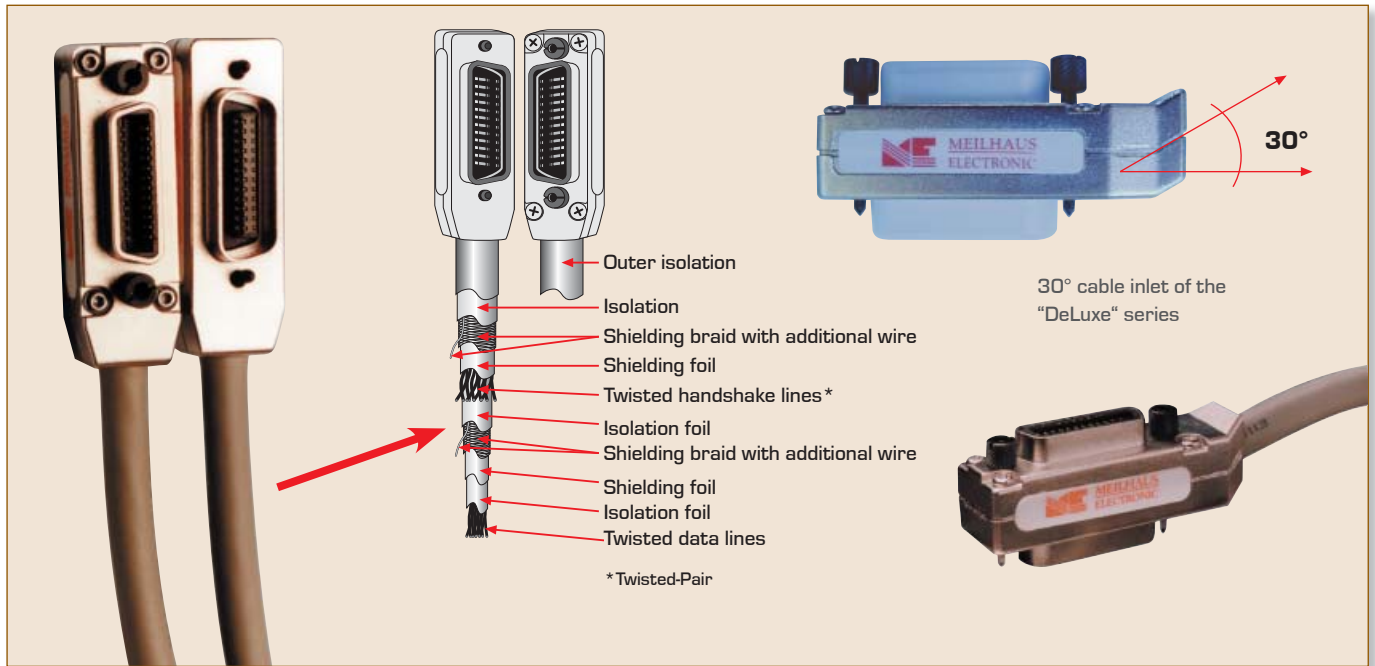


## Tested, high quality GPIB cable

### ME GPIB cable and GPIB accessories



#### GPIB distribution rails, adaptors, panels

Get your GPIB system structured

- Manual GPIB selector switch for 1 ↔ 2 (IEEE-UM2) or 1 ↔ 4 (IEEE-UM4):
  - Two or four PCs can access a GPIB measurement instrument or...
  - one PC can access 2 or 4 GPIB systems.
  - Robust, shielded metal box.
  - Synchronous switching of all 24 GPIB lines.
- GPIB distribution rails - IEEE-VT series
  - Flexible, well-arranged and reliable cabling on your lab bench or in 19" racks!
  - With 4x or 8x GPIB.
  - Aluminum rails.
- GPIB adaptors, panels - GPIB adaptor series
  - Extension adaptor, some cm.
  - Inversion adaptor: Inverts direction of cable 180°.
  - GPIB connector protector/metal cover.

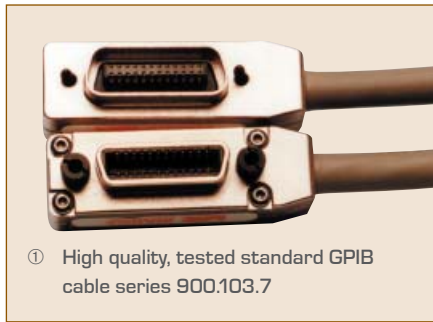
- Reliable transmission with twisted-pair lines.**
- High noise immunity with multiple shielding.**
- Robust and light, high quality piggyback connectors with aluminum housing.**

Use anywhere, either with...

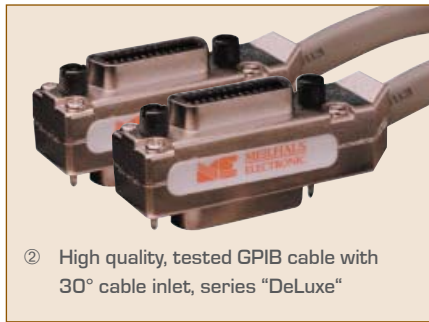
- standard connectors: Picture ① or
- 30° angled cable inlet: Picture ② or
- straight cable inlet on one side (D-sub style): Picture ③.

Useful for GPIB interfaces in PC slots which are difficult to access.

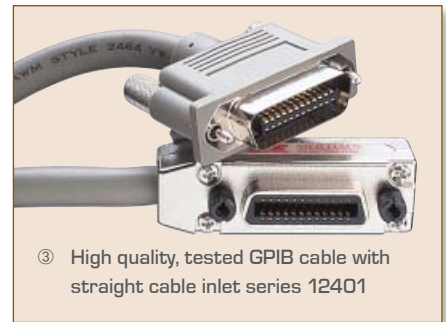




① High quality, tested standard GPIB cable series 900.103.7



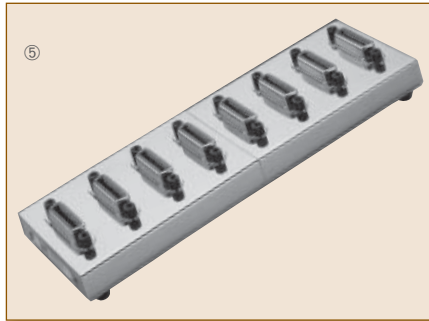
② High quality, tested GPIB cable with 30° cable inlet, series "DeLuxe"



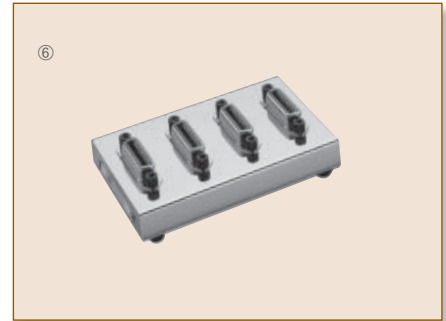
③ High quality, tested GPIB cable with straight cable inlet series 12401



④



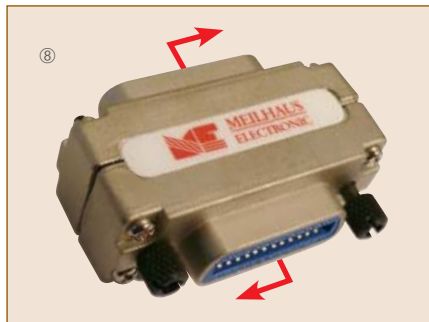
⑤



⑥



⑦



⑧



⑨

### Model overview

(for a list of the available standard models see our website!). **Note: Attractive scaled prices per 10, 50 or 100 pieces!**

Length	Series 900.103.7 ①:			Series „DeLuxe“ ②:	Series with straight cable inlet ③:
	ME type	Agilent Technologies corresponding type	National Instruments corresponding type	ME type	ME type
0.5 m	900.103.7-0,5	10833D	763061-005	IEEE488 DeLuxe 0,5	12401.05
1 m	900.103.7-1	10833A	763061-01	IEEE488 DeLuxe 1	12401.1
2 m	900.103.7-2	10833B	763061-02	IEEE488 DeLuxe 2	12401.2
3 m	900.103.7-3	-	-	-	-
4 m	900.103.7-4	10833C	763061-03	IEEE488 DeLuxe 4	12401.4
6 m	900.103.7-6	-	-	-	-
8 m	900.103.7-8	-	763061-04	IEEE488 DeLuxe 8	-
10 m	900.103.7-10	-	-	IEEE488 DeLuxe 10	-
12 m	900.103.7-12	-	-	IEEE488 DeLuxe 12	-
15 m	900.103.7-15	-	-	-	-
20 m	(900.103.7-20)	-	-	IEEE488 DeLuxe 20	-

④	IEEE-UM2	Manual GPIB selector switch 1-to-2
	IEEE-UM4	Manual GPIB selector switch 1-to-4
⑤	IEEE-VT-4	IEEE488 bus/GPIB quad distribution rail
⑥	IEEE-VT-8	IEEE488 bus/GPIB octo distribution rails
⑦	AD-111	IEEE488/GPIB extension adaptor
⑧	AD-112	IEEE488/GPIB inversion adaptor; inverts cable direction 180°
⑨	13145-1	Metal connector protector/cover, screwable, protects IEEE488/GPIB female connectors



More information and accessories:  
[www.meilhaus.com/gpib](http://www.meilhaus.com/gpib)